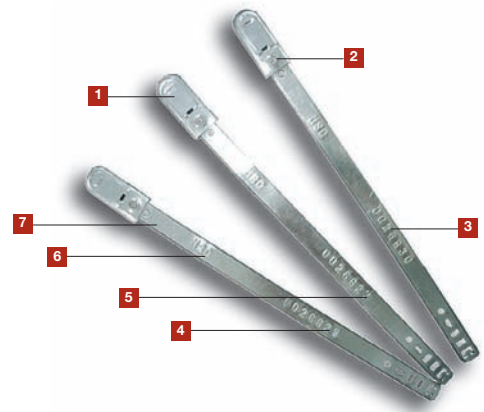


HOWENI A/S  
RØDAGER ALLÉ 125-127  
DK-2610 RØDOVRE  
T +45 7010 5588  
F +45 7010 5599  
HOWENI@HOWENI.DK  
WWW.HOWENI.DK

**INSIDE THE LOCKING CHAMBER**

A locking box is secured to one end of strip measuring 40 mm in length x 16 mm in width. A male lock is located on the other end of strip, intermitted with the locking mechanism. A female lock is housed in the locking box.

Typical applications of the Orbit seal include: Customs, Airlines, Shipping, Railways, Trailers, Trucks & Tankers, Baggage & Cargo Control, Warehousing, Oil Refineries etc.



ORBIT SEAL

**HIGHLY TAMPER-EVIDENT METAL SEAL**

- 1] Reverse metal locking mechanism cannot be disengaged by intrusion or manipulation.
- 2] Disassembly is impossible without leaving obvious traces of tampering.
- 3] All identity markings and numbers are embossed and cannot be altered.
- 4] Seals are customized and cannot be replicated or substituted.
- 5] Security features resist illegal manipulation, substitution and replication.
- 6] Unique traceability of each manufactured unit.
- 7] Strong and durable metal strap that can withstand the harsh handling and climatic elements in a long-haul shipment.

PRODUCT	MATERIAL	LOCKING LENGTH	STRAP DIMENSIONS	PULL STRENGTH	MARKING AREA	MARKING DIGITS
ORBIT	TIN -PLATE METAL	20.0 CM	0.3 X 10 MM	N/A	STRAP: 0.5 X 10.0 CM	ALPHA - MAX 16 NUMERIC - MAX 8
	CARTON QUANTITY	DIMENSIONS MM	WEIGHT KG/CARTON	VOLUME M3/CARTON		
	1,000	360 X 250 X 125	9.70	0.01125		