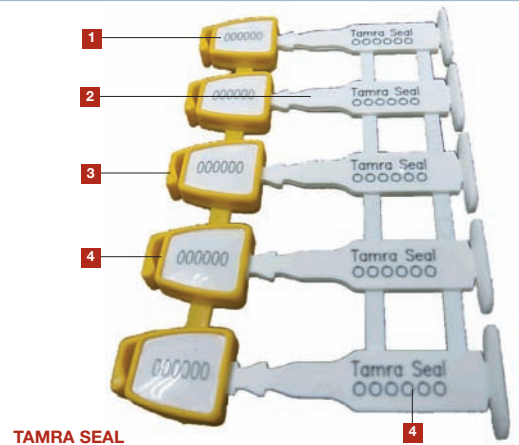
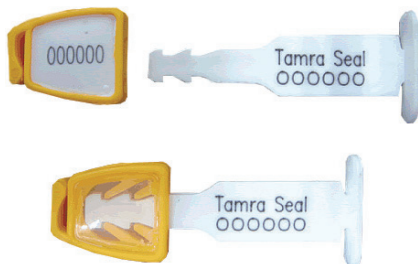


HOWENI A/S
RØDAGER ALLÉ 125-127
DK-2610 RØDOVRE
T +45 7010 5588
F +45 7010 5599
HOWENI@HOWENI.DK
WWW.HOWENI.DK

DESCRIPTION

The Tamra Seal has been designed specially to secure the contents of cash boxes and drums. The seal sits tightly when applied and is therefore very useful for applications like coin boxes that fit into a public phone.



TAMRA SEAL

**COST-EFFECTIVE EASY APPLICATION
METER SEALS**

- 1] The Tamra Seal features a clear "Inspection Window" on the head of the seal that makes the locking mechanism easily accessible for visual inspection of tampering or manipulation.
- 2] The Tamra Seal has a double locking mechanism for added security.
- 3] The locking mechanism is made of the flexible PP material and the body is moulded from high impact ABS material.
- 4] The Inspection Window is ultrasonically welded onto the seal, so it cannot be removed without showing very clear evidence of tampering.
- 5] The Tamra Seal is etched with permanent laser marking on both parts, which prevents part replacement.

PRODUCT	MATERIAL	LOCKING LENGTH	STRAP DIMENSIONS	PULL STRENGTH	MARKING AREA	MARKING DIGITS
TAMRA SEAL	ABS BODY WITH POLYPROPYLENE LOCKING HEAD	17.0 MM	2.0 X 7.0 MM	35 KG	BODY: 1.0 X 3.0 CM CAP: 1.0 X 1.2 CM	MAX 10
	INNER CARTON QUANTITY	DIMENSIONS MM	WEIGHT KG/CARTON	VOLUME M3/CARTON	STANDARD COLOURS	
	1,000	15 X 275 X 200	3.86	0.01733	YELLOW, BLUE, WHITE, RED & GREEN	
	OUTER CARTON QUANTITY	DIMENSIONS MM	WEIGHT KG/CARTON	VOLUME M3/CARTON		
	5,000	1030 X 285 X 325	19.3	0.09540		