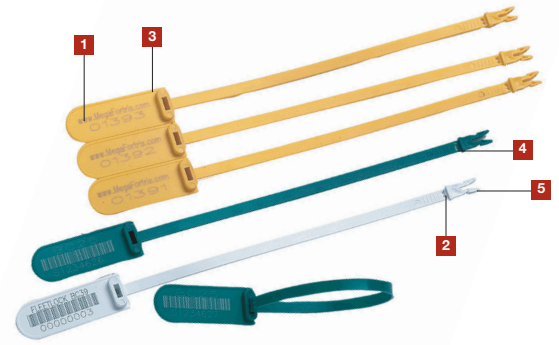


A ROBUST SECURITY SEAL

Like other MegaFortris security seals, the Fleet Lock does more than most other seals when securing your assets. The durable construction passes the hot water test – a common method used to breach one-piece moulded seals. When the Fleet Lock seal is locked correctly, the toes protrude through the back of the locking chamber. This feature ensures proper sealing and at the same time prevents tampering from the back of the seal.



FLEET LOCK

VERSATILE SEAL WITH METAL LOCKING

- 1] Fleet Lock seals are etched with permanent laser marking. Laser marking offers the highest level of security as it cannot be removed and replaced.
- 2] A large flap area gives the user ample space for customized information and ease of identification.
- 3] Security breaking lines at the snapping point provides easy removal of the seal and prevents a broken seal from being glued or welded together without leaving evidence of tampering.
- 4] A double locking mechanism makes the Fleet Lock seal stronger and more difficult to tamper with.
- 5] The stopper deters tampering when the seal is secured.

PRODUCT	MATERIAL	LOCKING LENGTH	STRAP DIMENSIONS	PULL STRENGTH	MARKING AREA	MARKING DIGITS
FLEETLOCK	POLYPROPYLENE	18.0 CM	1.0 X 8.0 MM	19 KG	FLAP: 1.5 X 4.0 CM	MAX 8
	INNER CARTON QUANTITY	DIMENSIONS KG/CARTON	WEIGHT M³/CARTON	VOLUME QUANTITY	STANDARD COLOURS:	
	1,000	450 X 230 X 275	4.40	0.02846	YELLOW, BLUE, WHITE, RED & GREEN	
	OUTER CARTON QUANTITY	DIMENSIONS KG/CARTON	WEIGHT M³/CARTON	VOLUME QUANTITY		
	5,000	1190 X 470 X 300	22.00	0.16779		