

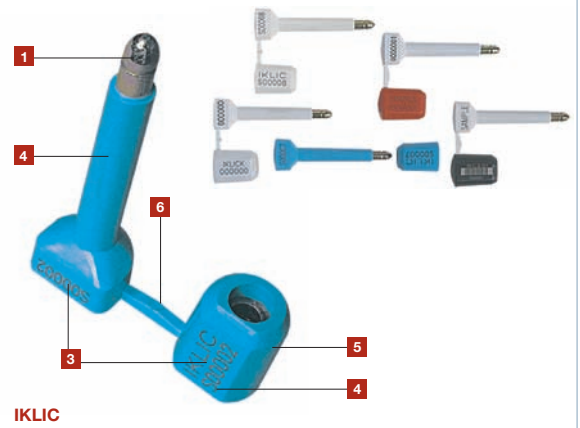
HOWENI A/S  
RØDAGER ALLÉ 125-127  
DK-2610 RØDOVRE  
T +45 7010 5588  
F +45 7010 5599  
HOWENI@HOWENI.DK  
WWW.HOWENI.DK

**BENEATH THE ABS HOUSING**

The iKlic is a high quality bolt container seal. It is specifically designed to be applied on long haul containers but it is also winning a strong foothold in the ground transport industry.

The iKlic can easily be applied by hand but must be removed with a high strength bolt cutter at destination.

Typical applications of the iKlic Seal include containers in general and shipping and intermodal containers in particular. The iKlic is also widely used for ground transportation.



**COST-EFFECTIVE EASY APPLICATION  
METER SEALS**

- 1] High-strength steel pin and solid steel barrel for added security.
- 2] Moulded with a high-impact ABS material. The special highresilient ABS material does not break easily but will clearly show evidence of tampering.
- 3] Identical sequential numbers etched with laser technology on both barrel and bolt to prevent replacement of parts.
- 4] Standard markings include serial number, customer name/logo. A variation of bar codes can also be marked with laser technology.
- 5] Available with a transparent plastic cover that protects the marking on the bolt. Also available with coloured cap for the bush if different colours for pin and bush are required.
- 6] The bridge keeps the body and bolt together for better storage and easy handling

PRODUCT	MATERIAL	LOCKING LENGTH	BOLT DIMENSIONS	PULL STRENGTH	MARKING AREA	MARKING DIGITS
IKLIC	ABS WITH MILD STEEL PIN & BUSH	7.0 CM	Ø 9.0 MM	1,000 KG	PIN: 7 X 16 MM BUSH : 10 X 24 MM	MAX 9
	CARTON QUANTITY	DIMENSIONS MM	WEIGHT KG/CARTON	VOLUME M3/CARTON	STANDARD COLOURS	
	250	585 X 360 X 200	16.80	0.04212	RED, YELLOW, WHITE, GREEN & BLUE	