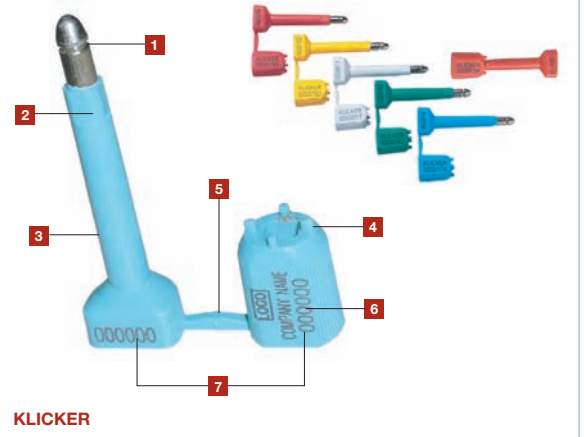


HOWENI A/S  
RØDAGER ALLÉ 125-127  
DK-2610 RØDOVRE  
T +45 7010 5588  
F +45 7010 5599  
HOWENI@HOWENI.DK  
WWW.HOWENI.DK

**BENEATH THE ABS HOUSING**

Unlike the majority of bolt seals, the Klicker bush is made of an all metal high-strength steel construction. The clip – the actual locking mechanism - is embedded in a groove in the all metal bush, making the seals stronger and more difficult to tamper.

Typical applications of the Klicker seal include shipping and intermodal containers. The Klicker is also widely used for ground transportation.



**HIGH SECURITY CONTAINER SEAL**

- 1] High-strength steel pin and bush for added security.
- 2] Anti-Spin locking mechanism prevents friction attack.
- 3] The pin and bush are both moulded with ABS to provide high tamper-evident properties and space for laser marking.
- 4] The special high-resilient ABS material does not break easily but will clearly show evidence of tampering.
- 5] The two parts of the Klicker bolt seal are joined together for easy handling.
- 6] The Klicker seals are etched with permanent laser marking. Laser marking offers the highest level of security as it cannot be removed and replaced.
- 7] Identical sequential numbers on both parts provide greater security as it prevents parts substitution or replacement.

| PRODUCT | MATERIAL                       | LOCKING LENGTH  | BOLT DIMENSIONS  | PULL STRENGTH    | MARKING AREA                         | MARKING DIGITS |
|---------|--------------------------------|-----------------|------------------|------------------|--------------------------------------|----------------|
| Klicker | ABS WITH MILD STEEL PIN & BUSH | 7 CM            | Ø 9.0 MM         | 1,200 KG         | PIN : 7 X 16 MM<br>BUSH : 10 X 24 MM | MAX 9          |
|         | CARTON QUANTITY                | DIMENSIONS MM   | WEIGHT KG/CARTON | VOLUME M3/CARTON | STANDARD COLOURS                     |                |
|         | 250                            | 585 X 360 X 200 | 16.00            | 0.04212          | RED, YELLOW, WHITE, GREEN & BLUE     |                |