

HOWENI A/S

RØDAGER ALLÉ 125-127

DK-2610 RØDOVRE

T +45 7010 5588

F +45 7010 5599

HOWENI@HOWENI.DK

WWW.HOWENI.DK

DESCRIPTION

The Cable Locks are very user-friendly and highly tamper evident.

They are available with different cable diameters to secure various applications with different security requirements.

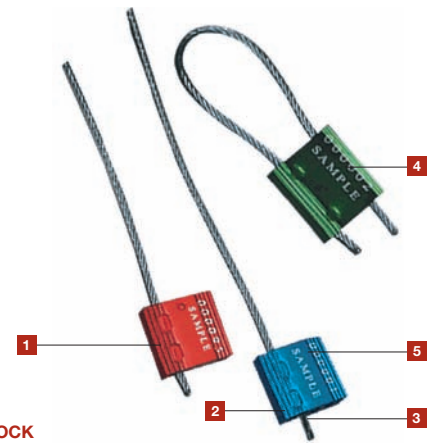
The seals are secured as soon as the wire has passed through the one-way locking mechanism. To maximize security and to prevent tampering, the wire must be adjusted to fit tightly to the application.

Cable Locks are widely used on trucks, tanker trucks, air cargo containers, shipping containers, rail cars, calibrators and valves.

HIGH SECURITY CONTAINER SEAL

- 1] Parts of the exterior have been designed with a rib pattern, which protects the markings during rough handling.
- 2] The one-way locking mechanism provides fast and easy sealing.
- 3] One end of the cable is permanently secured into the locking body.
- 4] The Cable Lock is anodised in solid colours, which accommodate customised laser marking. Anodising also makes colour coding possible and eases identification from a distance.
- 5] All Cable Locks are etched with permanent laser marking. Laser marking offers the highest level of security as it cannot be removed and replaced.

CABLE LOCK



PRODUCT	MATERIAL	CABLE LENGTH	CABLE DIMENSIONS	PULL STRENGTH	MARKING AREA	MARKING DIGITS
CABLE LOCK 250	ALUMINIUM BODY, MILD STEEL WIRE	18.0 CM	Ø 2.4 MM	500 KG	BODY: 2.0 X 2.0 CM	MAX 10
CABLE LOCK 300	ALUMINIUM BODY, MILD STEEL WIRE	20.0 CM	Ø 3.0 MM	1,000 KG	BODY: 3.0 X 3.0 CM	MAX 15
CABLE LOCK 500	ALUMINIUM BODY, MILD STEEL WIRE	25.0 CM	Ø 5.0 MM	1,200 KG	BODY: 3.0 X 3.6 CM	MAX 15
	CARTON QUANTITY	DIMENSIONS MM	WEIGHT KG/CARTON	VOLUME M3/CARTON	STANDARD COLOURS	
MCL 250 X 18	500	300 X 270 X 160	11.0	0.01296	BLACK, BLUE, GOLD, GREEN & RED	
BCL 300 X 20	300	300 X 270 X 160	12.0	0.01296	BLACK, BLUE, GOLD, GREEN & RED	
MCL500 X 25	150	300 X 270 X 160	11.2	0.01296	BLACK, BLUE, GOLD, GREEN & RED	