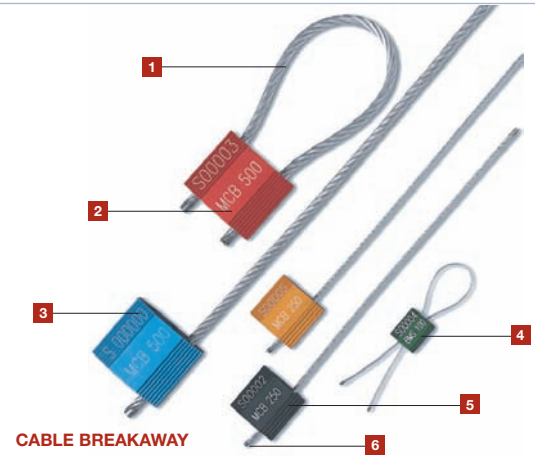


HOWENI A/S
RØDAGER ALLÉ 125-127
DK-2610 RØDOVRE
T +45 7010 5588
F +45 7010 5599
HOWENI@HOWENI.DK
WWW.HOWENI.DK

APPLIKATION

The Cable Breakaway seal is secured by turning the provided shear bolt until it securely locks the wire in place. The shaft of the shear bolt breaks when it has tightened the wire completely – and the seal can only be opened with a cable cutter.

The Cable Breakaway seals are highly cost effective compared to other cable seals made from premium quality materials.



COST EFFECTIVE BARRIER & SEMI BARRIER CABLE SEALS

- 1] The Cable Breakaway Seal is a high quality low-cost cable seal.
- 2] The exterior has been designed with a rib pattern, which protects the marking during rough handling.
- 3] The Cable Breakaway Seals are etched with permanent laser marking. Laser marking offers the highest level of security as it cannot be removed and replaced.
- 4] The Cable Breakaway seals are highly suited to securing valuables for longer periods of time because of its simple yet very efficient locking.
- 5] The Cable Breakaway seals are all anodised in solid colours which accommodate customised laser marking. Anodising also makes colour coding possible and eases identification from a distance.
- 6] One end of the cable is permanently secured into the locking body.

| PRODUCT | MATERIAL | LOCKING LENGTH | CABLE DIMENSIONS | PULL STRENGTH | MARKING AREA | MARKING DIGITS |
|----------------------------|---------------------------------|----------------------|---|-------------------------|---|----------------|
| CABLEBREAK-AWAY 100 | ALUMINIUM BODY, MILD STEEL WIRE | 25 CM | Ø 1.0 MM | 150 KG | BODY: 1.0 X 1.5 CM BUSH : 10 X 24 MM | MAX 8 |
| CABLEBREAK-AWAY 150 | ALUMINIUM BODY, MILD STEEL WIRE | 18 CM | Ø 1.5 MM | 250 KG | BODY: 2.0 X 2.0 CM | MAX 9 |
| CABLEBREAK-AWAY 250 | ALUMINIUM BODY, MILD STEEL WIRE | 18 CM | Ø 2.4 MM | 500 KG | BODY: 2.0 X 2.0 CM | MAX 9, |
| CABLEBREAK-AWAY 250 | ALUMINIUM BODY, MILD STEEL WIRE | 25 CM | Ø 5.0 MM STANDARD – CUSTOMIZED LENGTHS AVAILABLE | 1000 KG | BODY: 3.0 X 3.6 CM | MAX 10 |
| | CARTON QUANTITY | DIMENSIONS MM | WEIGHT KG/CARTON | VOLUME M3/CARTON | STANDARD COLOURS | |
| MVCB100 X 25 CM | 2,000 | 300 X 270 X 160 | 20.0 | 0.01296 | BLACK, BLUE, GOLD, GREEN & RED | |
| MCB150 X 18 CM | 500 | 300 X 270 X 160 | 9.0 | 0.01296 | BLACK, BLUE, GOLD, GREEN & RED | |
| MCB250 X 18 CM | 500 | 300 X 270 X 160 | 12.14 | 0.01296 | BLACK, BLUE, GOLD, GREEN & RED | |
| MCB500 X 25 CM | 150 | 300 X 270 X 160 | 12.0 | 0.01296 | BLACK, BLUE, GOLD, GREEN & RED | |