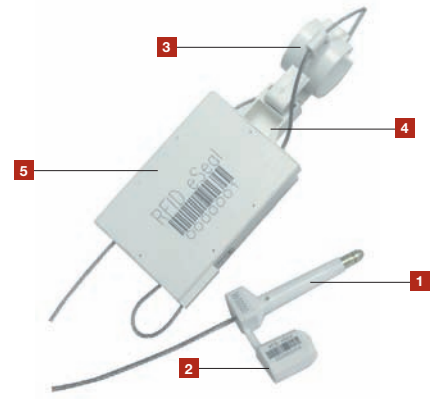


### TRACK-AND-TRACE ELECTRONIC SEAL

The ISIS Mega CableLock e-Seal Active combines the proven security features and strength of the Cable Lock seal (MCL250) and the Klicker bolt seal. Both these seals are certified compliant with ISO/PAS17712 and C-TPAT, and are used individually worldwide to protect high-value goods during transport in containers and trucks.

The ISIS Mega CableLock Active e-Seal boasts a combination of solid materials: rust proof aluminium body, a strong steel cable combined with a mild steel bolt and barrel moulded with high impact ABS. The RFID Active tag and circuitry is encased in a high-impact ABS body. The RFID tag is designed to detect and flag for tamper.



ISIS MCL ACTICE E-SEAL

### DOUBLE-SECURE CONTAINER LOCKING SYSTEM WITH BUILT-IN ACTIVE RFID DEVICE

- 1] The ISIS Mega CableLock Active e-Seal has a bolt seal on one end of a steel cable that secures the container door hasp.
- 2] The other end of the cable loops around the two bars on the container doors and then secured in a one-way locking mechanism.
- 3] The die-cast locking mechanism is encased in a high-impact ABS plastic body that also houses the RFID device and circuitry.
- 4] Customized marking may be etched on the two locking bodies with permanent laser technology. Identical serial numbers, logo and bar codes can be marked on all three parts of the seal if required.
- 5] The ISIS Mega CableLock Active e-Seal is designed and built to provide a secure, tamper-evident solution for easy integration into automated logistics and cargo management systems.

	MATERIAL	LOCKING LENGTH	DIAMETER	PULL STRENGTH	MARKING AREA	MARKING DIGITS
<b>BOLT</b>	MILD STEEL AND ABS	50 MM	9.0 MM	1,100 KG	BUSH 10X24 MM	MAX 9
<b>CABLE LOCK</b>	ALUMINIUM LOCK, STEEL WIRE	112 CM	2.5 MM	580+ KG		

#### RFID CHIP

64-BIT UNIQUE IDENTIFICATION NUMBER IS FACTORY PROGRAMMED TO COMPLY WITH ISO 185185 AND ISO18000 CONTAINER TRACKING PARAMETERS. 16 EVENT LOG PAGES ARE PROVIDED TO RECORD ACTIVATION, TAMPERING AND REACTIVATION OF THE SEAL.

#### FREQUENCY

FREQUENCY BANDS INCLUDE 315MHZ, 433MHZ, 869MHZ & 915MHZ BANDS.

#### MEMORY

THE DEVICE PROGRAM IS MAINTAINED IN FLASH MEMORY WHILE EVENT LOGGING IS MAINTAINED IN EEPROM (30 YEARS DATA RETENTION)

#### OPERATIONAL TEMP

-40°C TO +85°C

#### READ RANGE

100 METERS IN NON LINE OF SIGHT APPLICATIONS AND 200 METERS IN LINE OF SIGHT

#### READ RATE

TAG UID COLLECTION RATE:- 2000 TAGS PER SECOND. TAG LOG AND DATA READ RATE:- 200 TAGS PER SECOND.